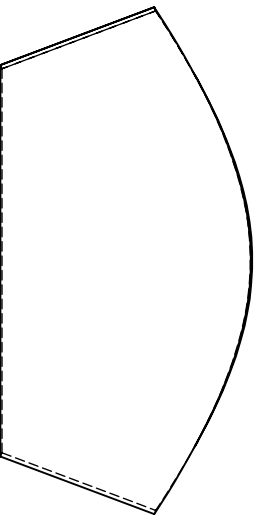
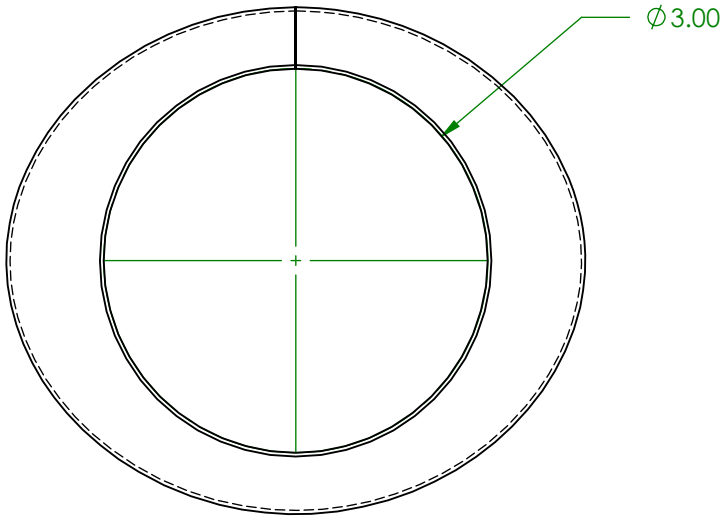
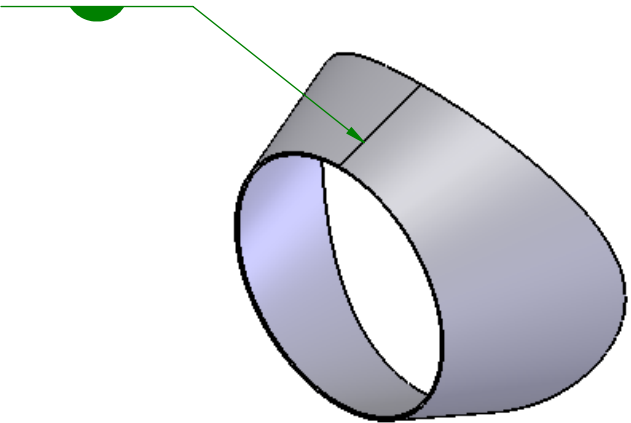
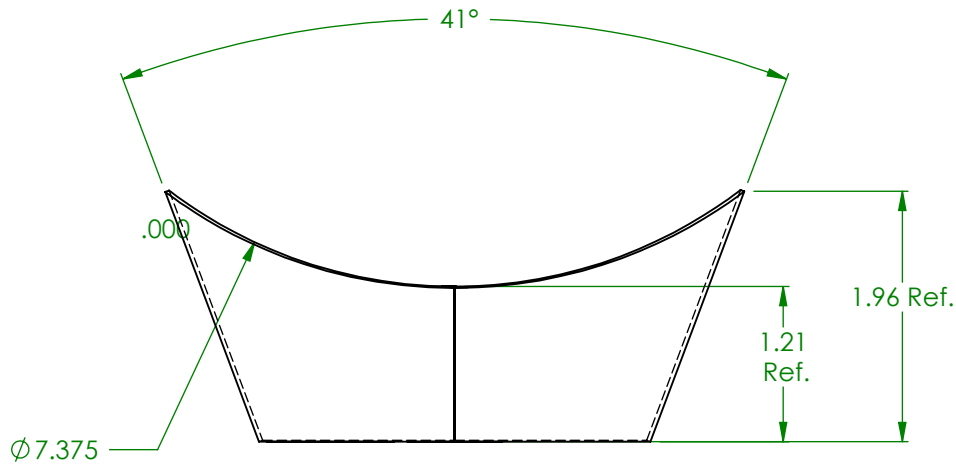


Deployed  
Not to scale



1 Item Req.  
Material SST-316 ou 316L  
22 gauge Thk.

| Units      |   |
|------------|---|
| Millimeter | <input type="checkbox"/> Inch <input checked="" type="checkbox"/> |
| TOLERANCE  |   |
| .XX        | ± .015  |
| .XXX       | ± .005  |
| .XXXX      | ± .001  |
| FRACTION   | ± 1/16  |
| ANGLE      | ± .5  |

|   |                         |  |                   |
|---|-------------------------|--|-------------------|
| <b>Luc Laforest inc.</b>  |                         | COMPANY: <b>Luc Laforest</b>                                 |                   |
| Design / Conception<br>Dessins / Drawings   |                         | PROJECT: <b>Turbine - GT4708R<br/>P2 Tube cone / Chamber</b> |                   |
| TITLE: <b>B</b>   | FILE: <b></b>           | PART: <b></b>  | REV: <b></b>      |
| DRAWING: <b></b>  | DATE: <b>10/27/2011</b> | SHEET: <b>1 \ 1</b>  | SCALE: <b>1:2</b> |
| DRAWN BY: <b>Luc Laforest</b>   | APPROVED BY: <b></b>    | DATE: <b></b>  | REV: <b></b>      |
| The schematic is the exclusive property of Luc Laforest and can not be used or reproduced without a written authorization from M. Laforest. |                         |  |                   |