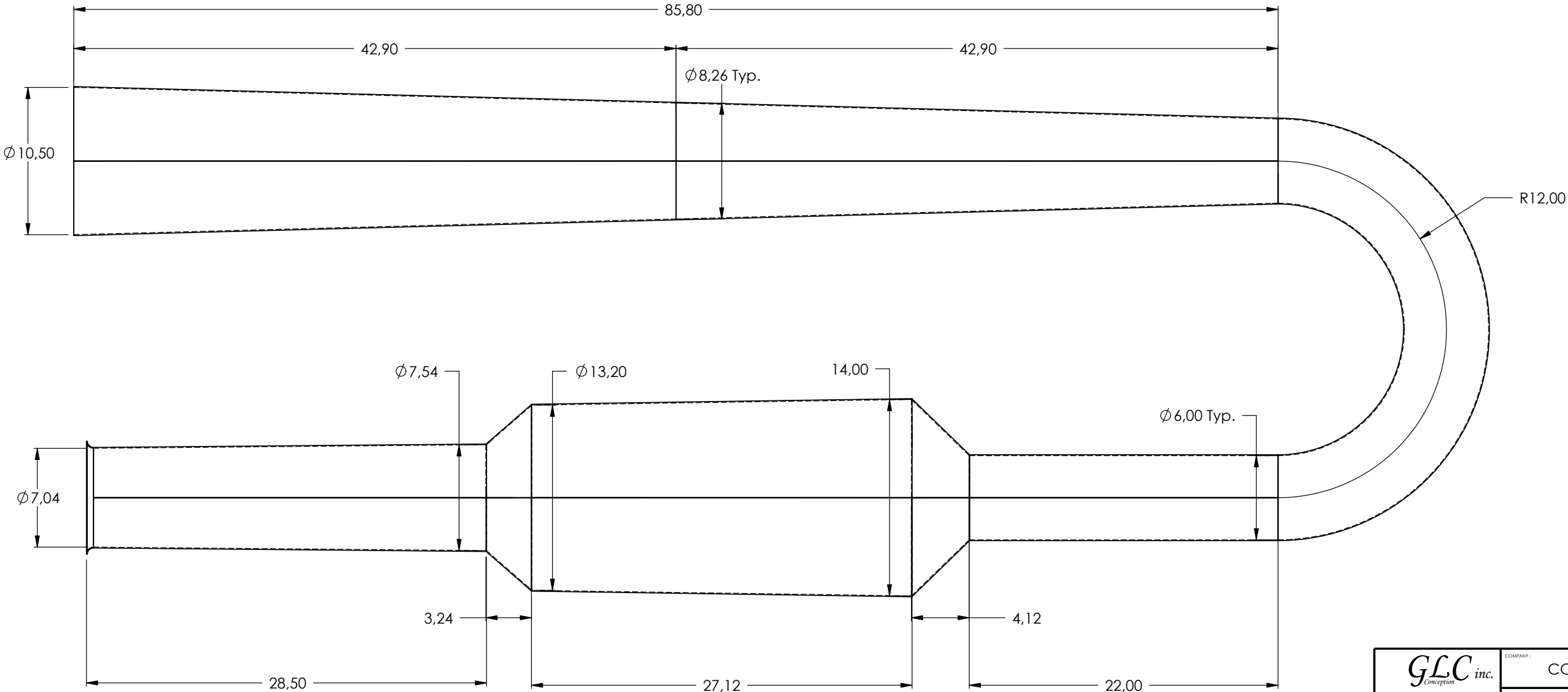
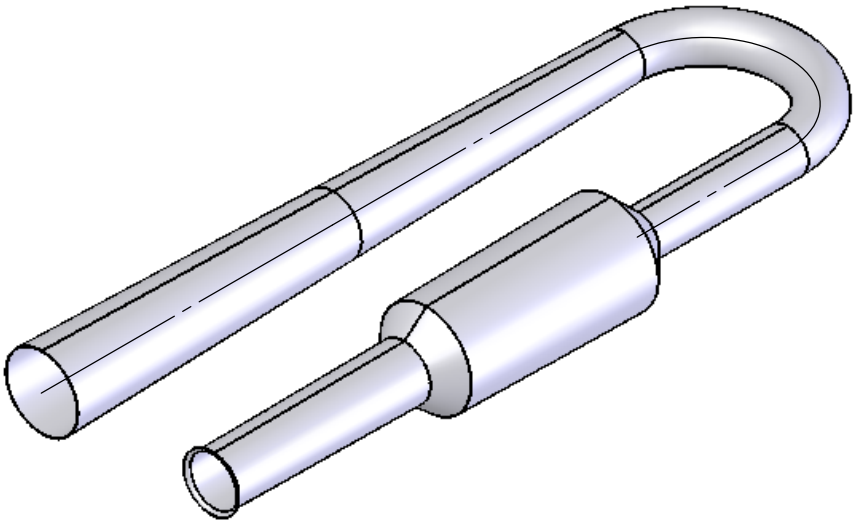


IMPORTANT NOTE

- 1- THIS IS A SCALED VERSION OF A STANDARD LOCKWOOD ENGINE.
- 2- THIS ENGINE HAS NEVER BEEN SUBMITTED TO TESTING, OPERATION OR VERIFICATIONS.
- 3- THIS ENGINE THRUST IS NOT KNOWN AND SHOULD BE ONLY OPERATED BY EXPERT.
- 4- THIS ENGINE WAS SCALED BY CONCEPTION GLC INC. AS PER REQUESTED BY CUSTOMERS AND SHOULD NOT BE HELD RESPONSABLE IF ENGINE DOES NOT OPERATE AND PERFORM AS EXPECTED.

WARNING ... WARNING

THIS ENGINE CAN CAUSE SEVEER BURNS AND INJURIES
AND CAN CAUSE DEATH IF NOT OPERATED WITH CAUTIONS
BY PROFESSIONAL AND EXPERIENCED TECHNICIAN



Units	
Millimeter	<input type="checkbox"/>
Inch	<input checked="" type="checkbox"/>
TOLERANCE	
.XX	± .015
.XXX	± .005
.XXXX	± .001
FRACTION	± 1/16
ANGLE	± .5

GLC inc. 322, Rang 5, RR1, Roberval, Qué. Canada G8H 2M9 Tel.: 418-275-8877 Fax : 418-275-0147 www.glc-inc.ca		COMPANY : CONCEPTION GLC INC.	
PROJECT : LOCKWOOD ENGINE SCALED-UP		DATE : 22/01/05	
DRAWING : B		SHEET : 1 \ 1	
DRAWN BY : Luc Laforest		SCALE : 1:24	
APPROVED BY :		DATE :	
This drawing can not be use or reproduce without a written authorisation issued by Conception GLC Inc.			